



FAREHAM ACCESS GROUP

DISABILITY DOESN'T
STOP US!

NOVEMBER / DECEMBER 2005 NEWSLETTER
Tel: 023 9238 8049 Web: www.farehamaccess.org.uk

Disability Rights Commission = (DRC)'s aim of, "A society where all disabled people can participate fully as equal citizens".

DISABILITY RIGHTS COMMISSION in bar fight.

The DRC is set to support its second legal case under the Disability Discrimination Act's (DDA) physical access duties.



It is supporting the case against the Spirit Group, which owns 2,400 pubs across the UK over the lack of an accessible toilet in The Shirley Inn in Croydon.

Source:- *DN disabilitynow* November 05

NO ACCESS AT THE SPINNAKER



TOWER FOR WHEELCHAIR USERS AND OTHERS WITH SEVERE HEALTH PROBLEMS until the outside lift is given a safety certificate.

The tower opened on 18th October but without the two lifts operating the company is not

allowed to take up any wheelchair users in case the internal lift breaks down. There are many hidden examples of discrimination against disabled people and good that this one is highlighted by Joan, a (FAG),

Fareham Access Group member working in conjunction with the Leonard Cheshire Society.
Source:- *F & G News* 21.11.05.

APOLLO CINEMA, FAREHAM

Now that winter is upon us, my wife and I recently fancied a visit to the cinema. A good opportunity to check out the brand new Apollo multiplex in Fareham. As a wheelchair user, I assumed that because the cinema was only opened this year, it was bound to be wheelchair user friendly.



How wrong I was.

O.K. I could get into the cinema via the lift but the wheelchair spaces are immediately below the screen. If you can imagine watching your home television at full volume from a distance of less than one arms length? That is what it is like. There is no way that a wheelchair user can "sit in the back row" because of the obstacle course of steps. I really cannot believe that a brand new facility can escape the needs of the Disability Discrimination Act and the local planning department.

I find it to be totally irresponsible to build any new facility that does not consider the needs of all disabled people. Why do builders not employ

the services of Occupational Therapists or the local Access Group?

Source:- Alan, FAG member Nov 05

A quote from the 'In Touch' Portchester, Autumn 05:

"The luxury Cinema was opened in July" and according to Sean Woodward, FBC Executive Leader "The new cinema is already breaking all records for its owners and providing a much needed facility." Editor; If you have used this venue let us have YOUR point of view!

WHEELCHAIR USERS BARRED FROM BARS

All they wanted was a drink – BUT a group of wheelchair users were



stunned to find in their pub audit, they could get into only two out of the five pubs in Fareham.



The Red Lion Hotel in East St. and The Lord Arthur Lee in West St. were both singled out for praise as easily accessible; and Joan, the FAG member was there again!

A year on since the Disability Discrimination Act (DDA) part 3 was introduced, 1st Oct 2004 in a bid to improve access by removing physical barriers. Improvements are happening BUT there is still much to be done.

Source:- F & G News 30.10.05



Listed Buildings are now NOT exempt from improving access facilities.

See: 'Easy Access to Historic Buildings' and 'Easy Access to Historic Landscapes'. For copies of these booklets and alternative formats contact English Heritage Tel: 0870 333 1181 Fax: 01793 414 926 Website: www.englishheritage.org.uk/easyaccess

Parking for Blue Badge Holders at Queen Alexandra Hospital Is this good enough?



These (DPPB) Disabled Persons Parking Bays in the Nightingale Car Park (the one with the ramp) at Queen Alexandra Hospital, Cosham, Portsmouth, are not the internationally recommended size. See Photograph 20.09.2005. If the bays are still like this; and you are a Blue Badge Holder and having access problems with them contact: Glen Hewlett, Director of Development & Estates 023 9222 2075 email: glen.hewlett@porthosp.nhs.uk AND complain!

The next Fareham Access Group Meeting is Wednesday 11th January 2006, 12 for 12.15pm start to 1.50pm at the Portchester Parish Hall. Do come along, or get in touch with Lorraine: 023 9238 8049. A new access project lead by Alan one of our members.... which Pubs can wheelchair users actually use in the Fareham Borough? Plus..... Recycling issues. An opportunity to have your say, and, enjoy a free light lunch!



Don't forget to bring your own plate and cup and to request accessible transport from John at least 2 weeks prior to the meeting date.

EASY ACCESS PATH UPDATE

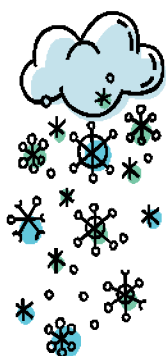
It's getting really exciting as the relevant paper work is gradually being signed by the relevant people. Once all of them have been received the path round Cams Hall Golf Course will be a permissive path and a Right Of Way = (ROW). The next step is to make it accessible for everyone to enjoy, not just those with strong legs. The steering group will reform in 2006.



'By all reasonable means: Inclusive access to the countryside for disabled people,' Landscape Access Recreation Tel: 01242 521 381 Fax: 01242 584 270 Web: www.countryside.gov.uk

South Downs (Hampshire) draft plans: To request a copy of the draft plan free of charge please contact Petronella Tel: 01962 845 326 Fax: 01962 845 335 or email access.development@hants.gov.uk

Draft plans can also be viewed online www.hants.gov.uk/countryside/access
Closing date for feedback on the South Downs (Hants) draft plan is 28.02.06.



Fareham Access Group wishes all its members and Newsletter readers "A very happy time this Christmas and New Year",

We value our partnership with all our colleagues and look forward to more challenges next year.



IMPROVED ACCESS TO HIGHLAND ROAD SHOPS

Your comments on this would be useful.

IMPROVED ACCESS TO MEON SHORE

Richard Rowland from the Environment Agency says the work will be completed before April 2006. Just waiting on the contractors to start!

Goodies for Christmas?

QED = Quality Enabling Devices
Innovative products for people with special needs. A family business in Gosport but moving to a better local venue soon. The Editor wanted an adaptor to fit to a wheelchair when using binoculars/camera to overcome a slight arm tremor. Super friendly service with home trial time on some products. To get a Catalogue Tel: 0870 787 8850 Fax: 0870 787 8860,
www.qedltd.com

Source: Lorraine November 2005

A new glass lift in Portsmouth for improved easy access to the Civic Offices in 06. It will accommodate a disabled person's pavement vehicle and conform to the DDA regulations. More news later.

Source:- PDF Access Working Group
26.11.05



Holly Hill Woodland Park Christmas Do 18th December around 2pm at

main Car Park off Barnes Lane, Sarisbury Green where guests will be directed to a ticket booth, £2.50 per adult, duration about an hour or so. Theme is Pirates/Lost Boys, and general format is that of a treasure hunt taking unescorted guests (there will be roving pirates to assist) in an anti clockwise circuit of lakes and finishing up at 'fairground' located just above picnic area for mulled wine, mince pies, soup.

The route is suitable for both powered and manual wheelchairs, but please phone: 01329 310 290 if you may need assistance with any part of the route.

Hot Meal..... Deals!

Jenny- Anne's Kitchen, Meal Delivery Service. A family run caterig business providing freshly cooked meals across the Fareham borough. Menu provides a dinner and dessert for only £3.75 per day plus a **FREE** sandwich and cake for tea. More info: Tel: 01329 231 634



OR Premier Meals, F & G Social Services Tel: 01329 285 566

OR Wiltshire Farm Foods frozen home meals service and covers Hampshire Freephone: 0800 773 773

OR There are Luncheon Clubs at different venues around the Fareham Borough (and other areas) if you want to get out and socilise as well. Contact your local Social Services, Community/ Voluntary Action and/or local voluntary/ community group.

Source:- Sarah Gibbins, Social Services

Chronic Fatigue Syndrome –

Follow-up from Sept/Oct Newsletter. The Centre for Complementary and Integrated Medicine offers treatment of Chronic Fatigue Syndrome and



other illnesses. Be aware it is mainly private and only NHS funded if GP can obtain from the PCT. Tel: 023 8033 4752 Fax: 023 8023 1835 Website:

www.complemed.co.uk/sitemap.htm

Source:- Martin Combs, F & G PCT Nov 05

This Newsletter is available in large print and other formats on request to Lorraine Tel: 023 9238 8049. Order your own copy for just £3.00 per annum. Your views on these or any other access issues please.